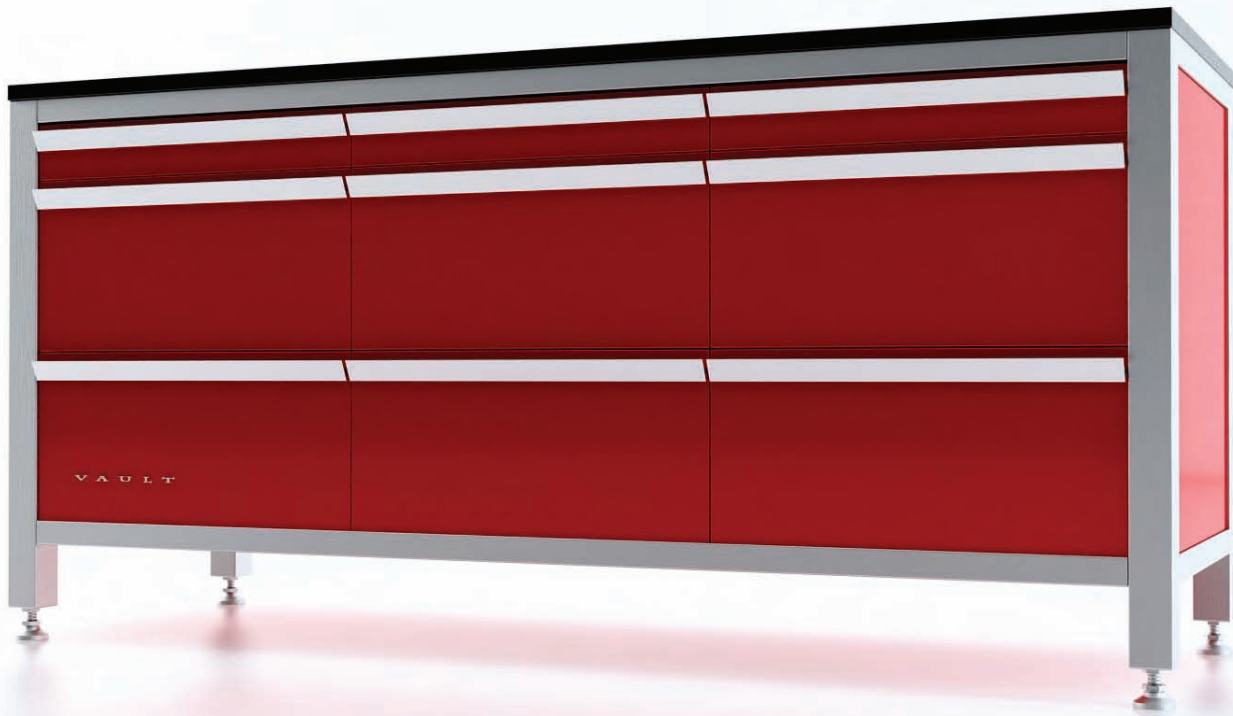


TRIPLE WORKCHEST™
NINE DRAWERS
972 - 3 X - 9 D



TRIPLE WORKCHEST W/NINE DRAWERS
SHOWN HERE IN
CORSA ROSSO
WITH BRUSHED STAINLESS TRIM

DRAWER HEIGHTS

Three (3) 3.5" Drawer

Six (6) 10.5" Drawers

TRIPLE WORKCHEST™
TWELVE DRAWERS
CONFIGURATION #1: 972-3X-12D1



TRIPLE WORKCHEST W/TWELVE DRAWERS
SHOWN HERE IN
STAINLESS STEEL
WITH BRUSHED STAINLESS TRIM

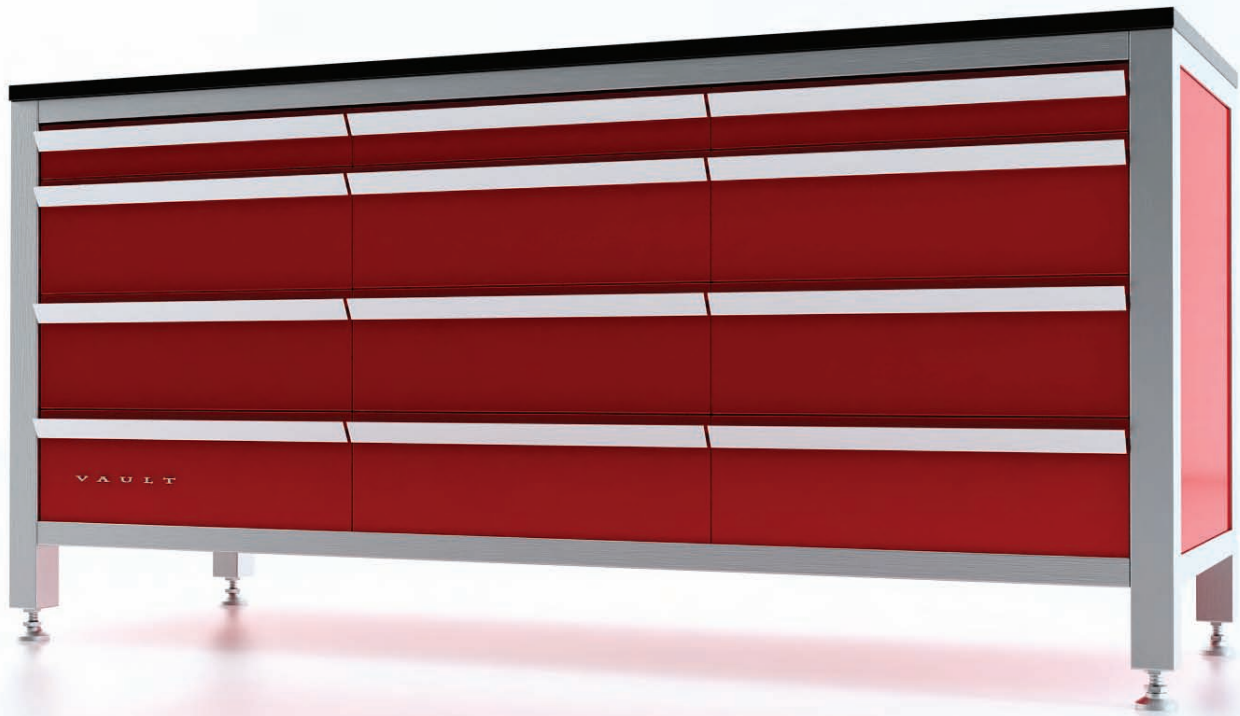
DRAWER HEIGHTS

Six (6) 3.5" Drawers

Three (3) 7.0" Drawers

Three (10) 10.0" Drawers

TRIPLE WORKCHEST™
TWELVE DRAWERS
CONFIGURATION #2: 972-3X-12D2



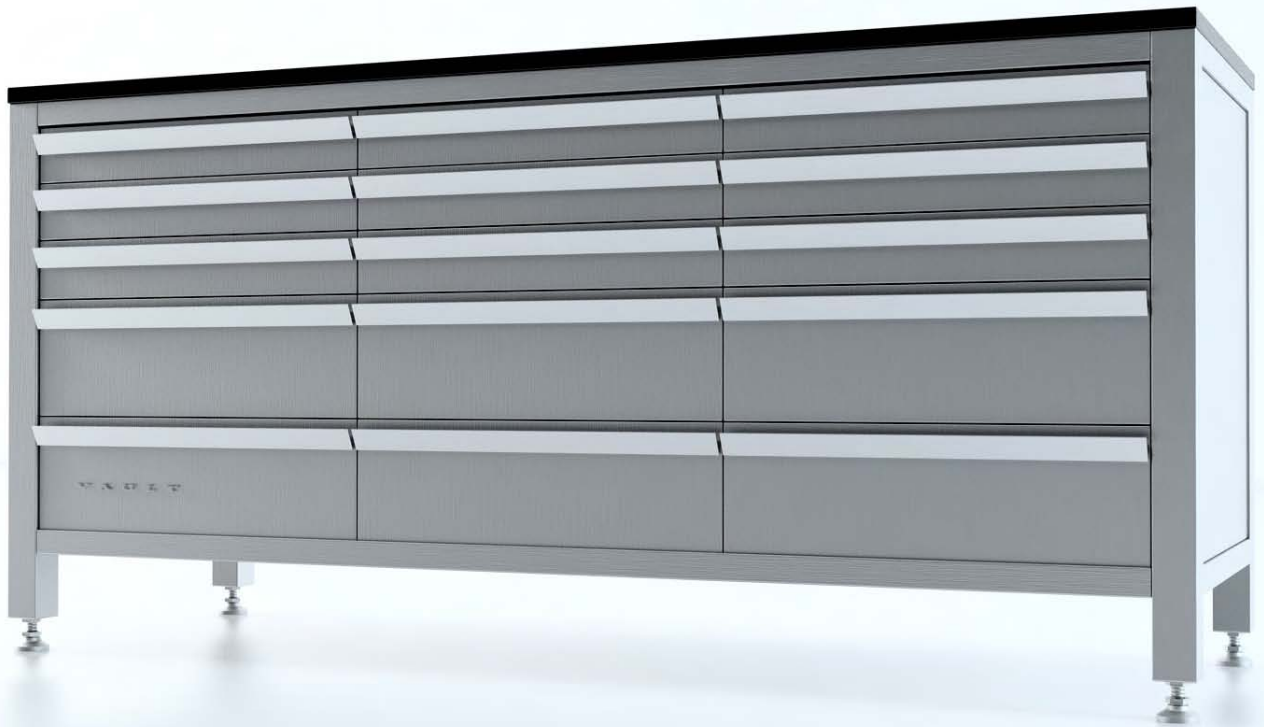
TRIPLE WORKCHEST W/TWELVE DRAWERS
SHOWN HERE IN
CORSA ROSSO
WITH BRUSHED STAINLESS TRIM

DRAWER HEIGHTS

Three (3) 3.5" Drawer

Nine (9) 7.0" Drawers

TRIPLE WORKCHEST™
FIFTEEN DRAWERS
972-3X-15D



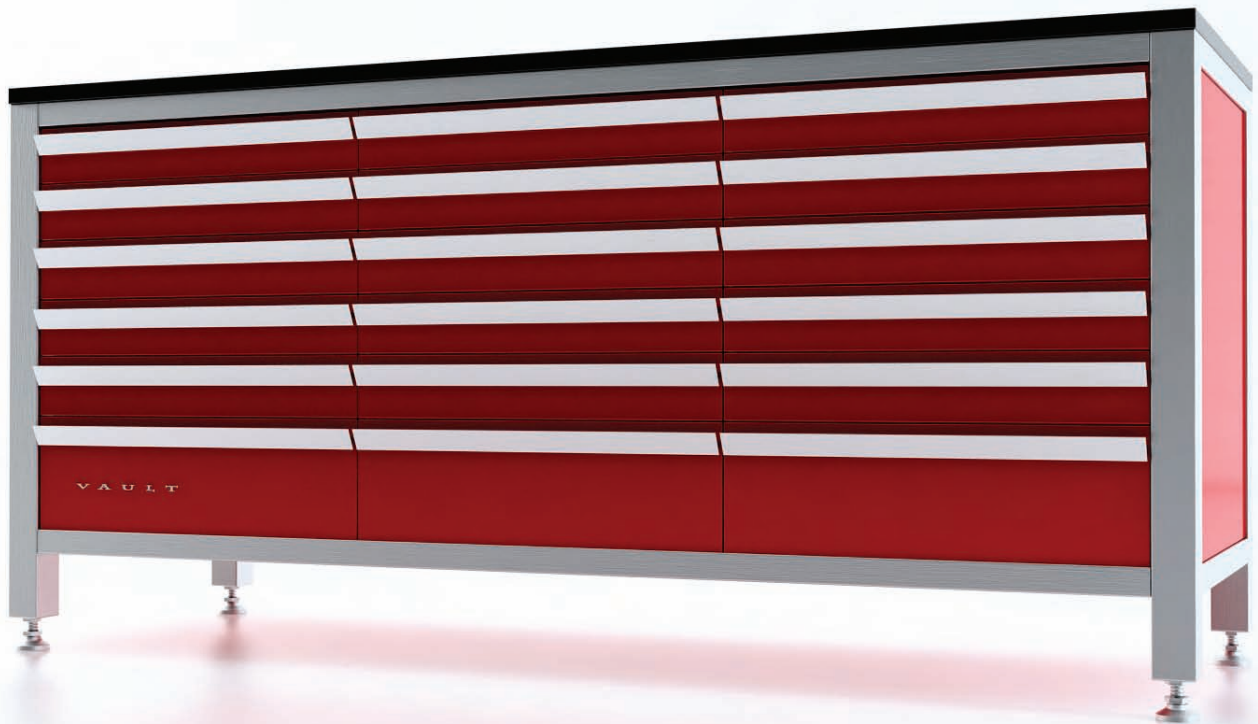
TRIPLE WORKCHEST W/FIFTEEN DRAWERS
SHOWN HERE IN
BRUSHED STAINLESS STEEL
WITH BRUSHED STAINLESS TRIM

DRAWER HEIGHTS

Nine (9) 3.5" Drawer

Six (6) 7.0" Drawers

TRIPLE WORKCHEST™
EIGHTEEN DRAWERS
972-3X-18D



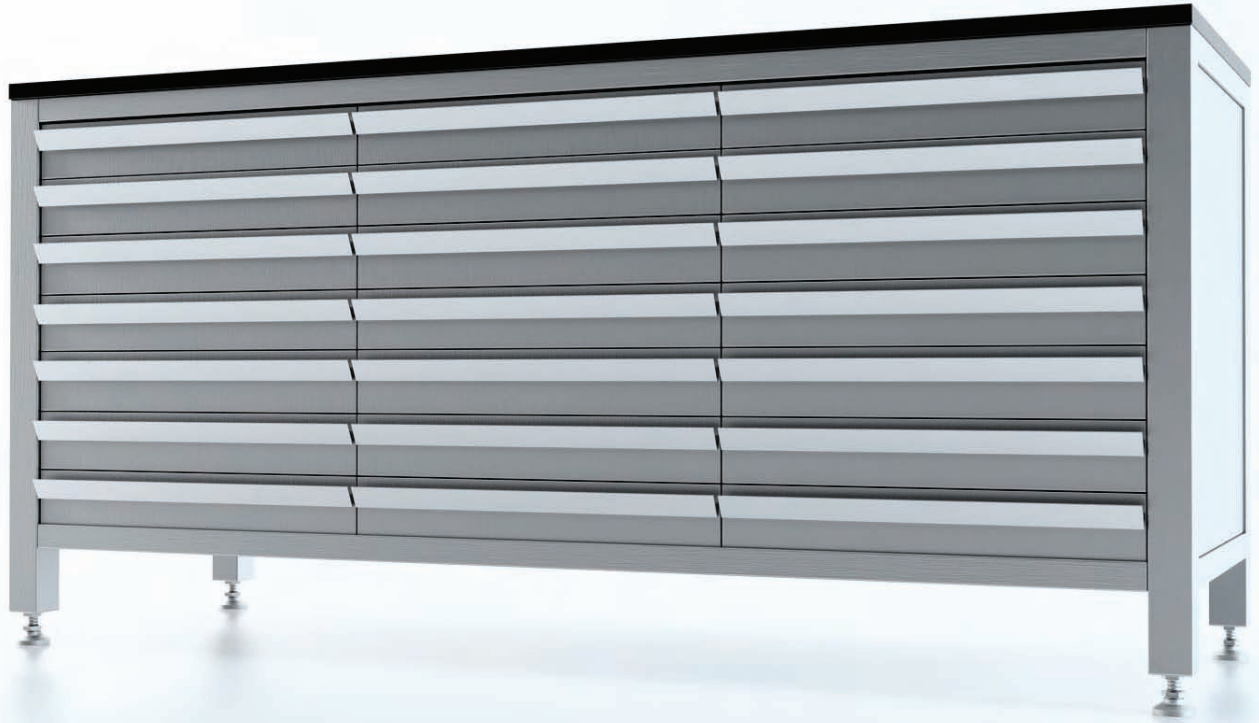
TRIPLE WORKCHEST W/EIGHTEEN DRAWERS
SHOWN HERE IN
CORSA ROSSO
WITH BRUSHED STAINLESS TRIM

DRAWER HEIGHTS

Fifteen (15) 3.5" Drawer

Three (3) 7.0" Drawers

TRIPLE WORKCHEST™
TWENTY-ONE DRAWERS
972-3X-21D



TRIPLE WORKCHEST W/TWENTY-ONE DRAWERS
SHOWN HERE IN
BRUSHED STAINLESS
WITH BRUSHED STAINLESS TRIM

DRAWER HEIGHTS

Twenty-One (21) 3.5" Drawers

TRIPLE WORKCHEST

TECHNICAL SPECIFICATIONS

RAW MATERIAL

- All-Stainless Steel Construction (Premium Grade 304 Alloy Stainless)
- Premium Grade Zinc Coated Steel is used on All Cabinets Ordered with a Powder Coated Finish

STRUCUTRAL

- Horizontal Frame Components are Constructed from 11-Gauge Thick Stainless Steel (0.1196" Thick Metal); Vertical Frame Components are Constructed from 16-Gauge Thickness
- Welded Reinforcing Plates
- Wall Construction Features Two (2) 14-gauge Outer and Inside Walls Reinforced with Interior Stiffening Flanges

DRAWERS

- 18-Gauge Drawer Bodies with Welded Corners, Hemmed Edges and Reinforcing Flanges
- Fully Welded 20-Gauge Drawer Faces

SUPPORT

- Nickel Plated Leveling Feet Support 5,000lbs Apiece (4" Vertical and 15° Adjustment)

HARDWARE

- Drawers Equipped with Full Extension ACCURIDE Ball Bearing Drawer Slides Rated at 180lb Capacity Apiece

SAFETY/SECURITY

- Slide Locking System Enables only One-Drawer to be open-at-a-time
- Optional Locking Cylinders by BEST LOCKS Secures All Drawers with a Single Key and can be Master Keyed with any other Vault Cabinet

WORKSURFACE

- ¾" Thick Composite Work Surface (**FSC Certified** – Made from 100% Post-Consumer Recycled Paper and Water-Based, Formaldehyde-Free Resins)

POWDER COATED FINISH

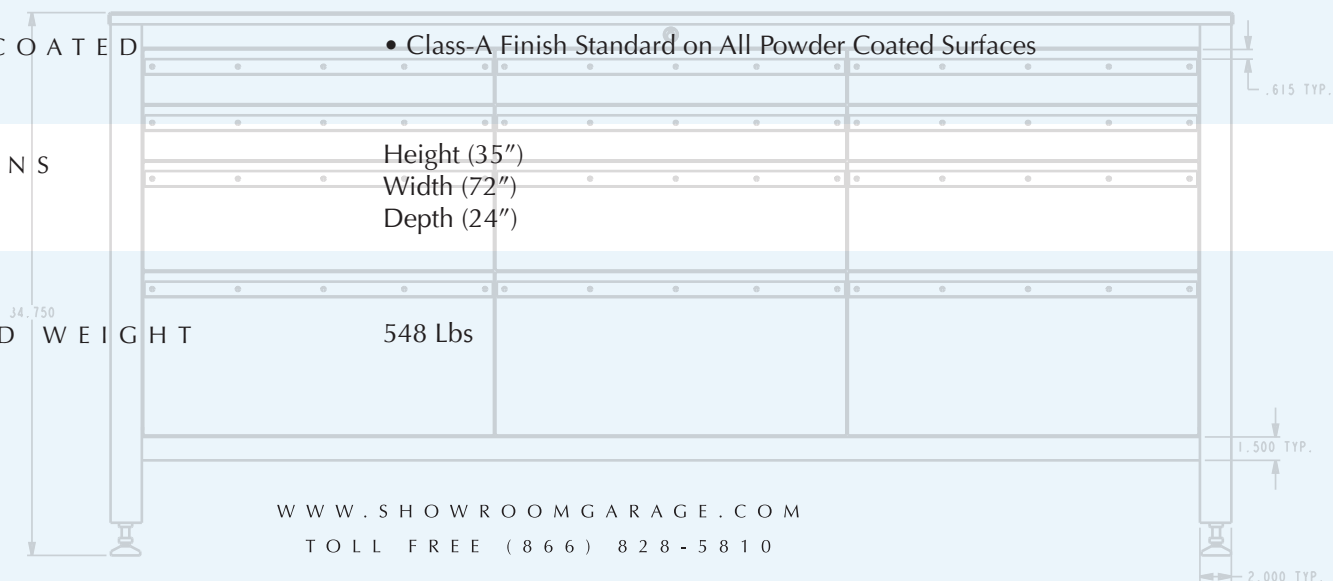
- Class-A Finish Standard on All Powder Coated Surfaces

DIMENSIONS

Height (35")
Width (72")
Depth (24")

ESTIMATED WEIGHT

548 Lbs



EXTERIOR FINISH OPTIONS

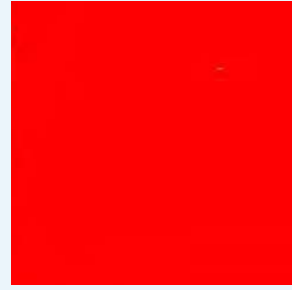
CHOICE OF POWDER COATED EXTERIOR
OR BRUSHED STAINLESS



AZUR BLUE



CORSA GIALLO



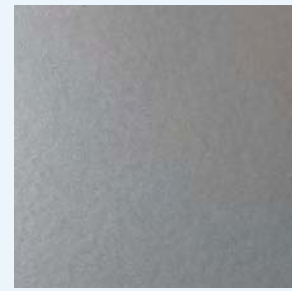
CORSA ROSSO



GRAPHITE METALLIC



STARLIGHT BLACK



QUICKSILVER
METALLIC

If our standard choice of colors is not exactly your style,
we will build according to your specific request



BRUSHED STAINLESS